



ACA SERIES PRODUCTS

Zero-Formaldehyde
Eco-friendly
Inorganic Decorative Board



Safe
& Reliable



Quality
Guaranteed



High-quality
Board



Advanced
Technology



INTRODUCTION TO COMPANY

Committed to creating
a zero-benzene,
formaldehyde-free, safe
and
healthy home.

Year 2013

The company was established
Listed on the Main Board of the
Hong Kong Stock Exchange
(Stock Code: 00586.HK)

2

Major main brands

Conch Venture ACA Series Products
Silica-free Carbon-negative Board ACB Series
Products

12+

Application fields

Widely used in external wall insulation
and decoration, internal wall
decoration and protection,
flooring, and other application
fields.

500+

Numbers of projects
With the accumulation of more than
500 projects, we have solidified a
professional foundation in the fiber
cement board field.

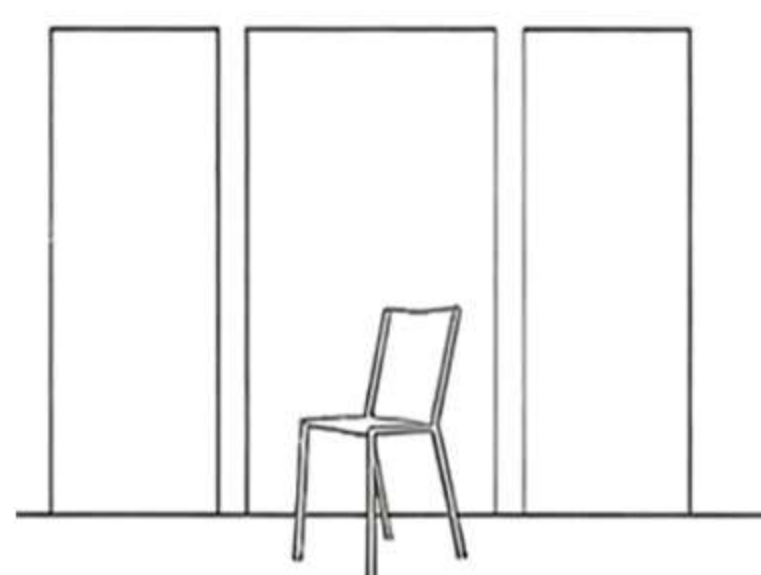


SGS

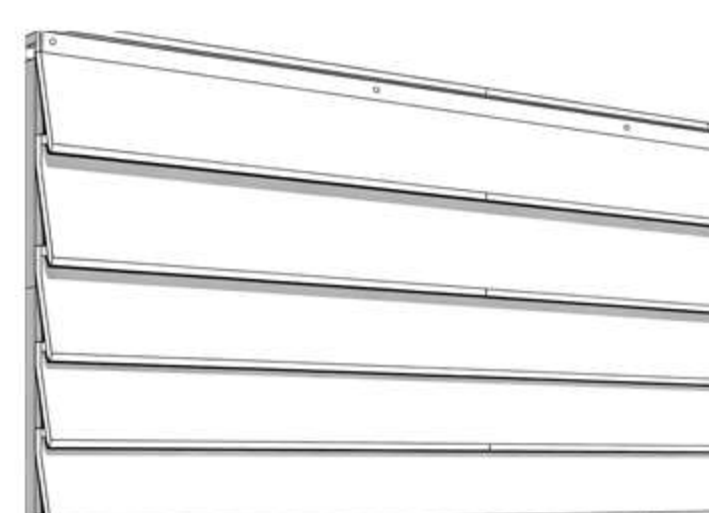


China Conch Venture Holdings Limited was listed on the Main Board of the Hong Kong Stock Exchange on December 19, 2013 (Stock Code: 00586.HK). It is a large enterprise group providing one-stop energy-saving and environmental protection solutions, with its business covering municipal solid waste incineration for power generation, new energy materials and energy storage product manufacturing, lithium-ion battery recycling and circular utilization, new building materials, port logistics, etc.

Anhui Conch Venture New Energy-saving Building Materials Co., Ltd. is a wholly-owned enterprise invested and established by China Conch Venture Holdings Limited, and has established Bozhou Conch Venture New Energy-saving Building Materials Co., Ltd. in Bozhou City. It specializes in the production of Conch Venture ACA and Silica-free Carbon-negative Board ACB series products, which are widely used in external wall insulation and decoration, internal wall decoration and protection, flooring, table tops, wall material linings, ceilings, floor slabs, billboards, cabin partitions, fireproof boards, furniture partitions, as well as post-processing fields such as coating, perforation, and embossing.



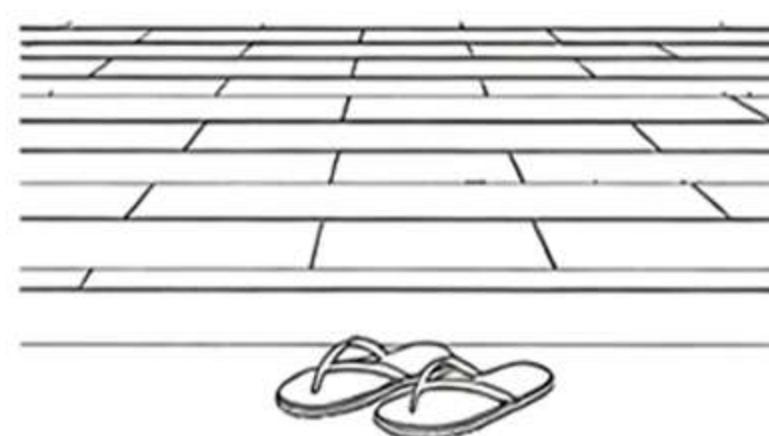
Formaldehyde-free
Inorganic
Decorative Panel



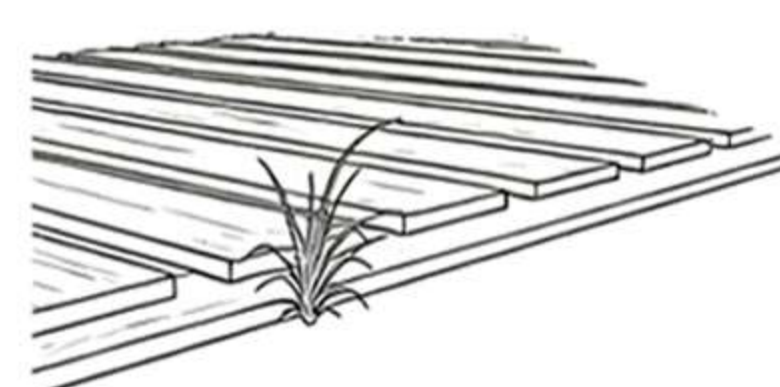
Siding Planks



Through-colored Board



Flooring



Outdoor Decking

INTRODUCTION TO Product



Formaldehyde
-Free



Non-
Combustible



Thermal
Insulation



Moisture
-proof



Insulation



Anti-
corrosive



Impact
Resistance

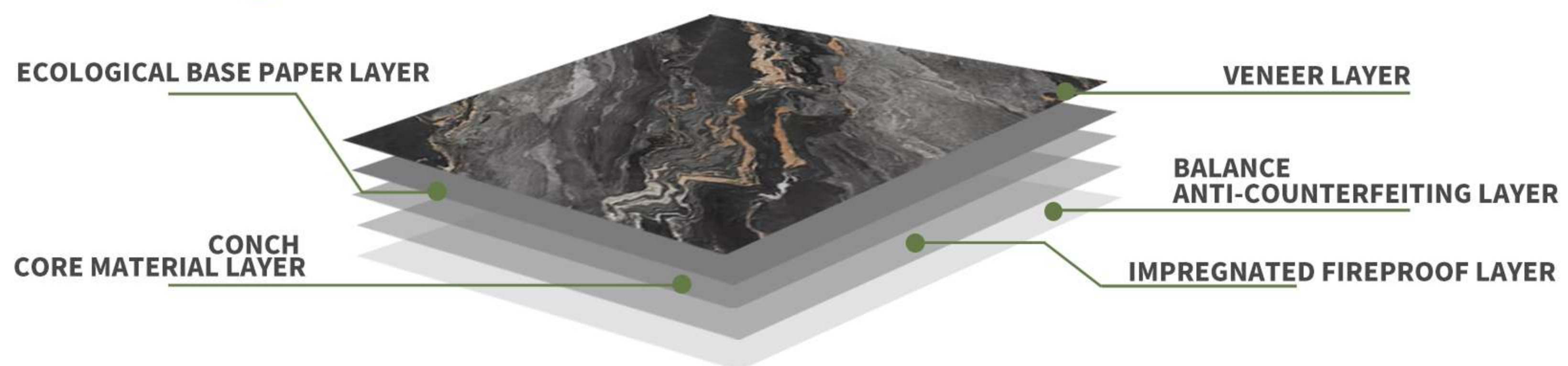


Convenient
Construction

Specification: 1215mm*2435/3045mm*5/6/8/10/12mm

ACA Zero-Formaldehyde Inorganic Decorative Board is a decorative board formed by post-processing such as veneering, spraying, and digital printing on ACA high-density base board. The product features realistic veneer texture, rich colors, fire and water resistance (Class A Fire Resistance), anti-corrosive and antibacterial, convenient installation, and ready-to-use after installation. Its application fields are not restricted by the climate temperature difference between northern and southern regions, and it can be widely used in various interior wall places such as hospitals, schools, subways, hotels, tunnels, sports venues, and office buildings.

■ Structural diagram



■ Comparison of advantages and disadvantages

MATERIAL	FIRE & RESISTANCE ENVIRONMENTAL RATINGS	ADVANTAGE	DISADVANTAGE
ACA Decoration Wall Panel	A2/ENF	Class A fire resistance Formaldehyde-free, rich veneers No swelling when absorbing water Dry construction, fast installation Move in immediately upon installation	Relatively heavy panels
Carbon Crystal Panel	B1/E0	Easy to cut, high cost-performance, light weight	Contains formaldehyde Low fire rating Smoky and toxic when burning En-impact-resistant surface Easy to deform
Ceramic Tile	A/-	High surface hardness Traditional facing material high acceptance by the industry	Wet construction Long construction period High construction cost Much construction waste on site
Gypsum Board	B1/E1	Economical price High cost-performance Light and strong, relatively convenient construction	Not moisture-resistant Poor waterproof performance Fragile and easy to crack Poor impact resistance limited load-bearing capacity

01.

Gypsum Board
Damage



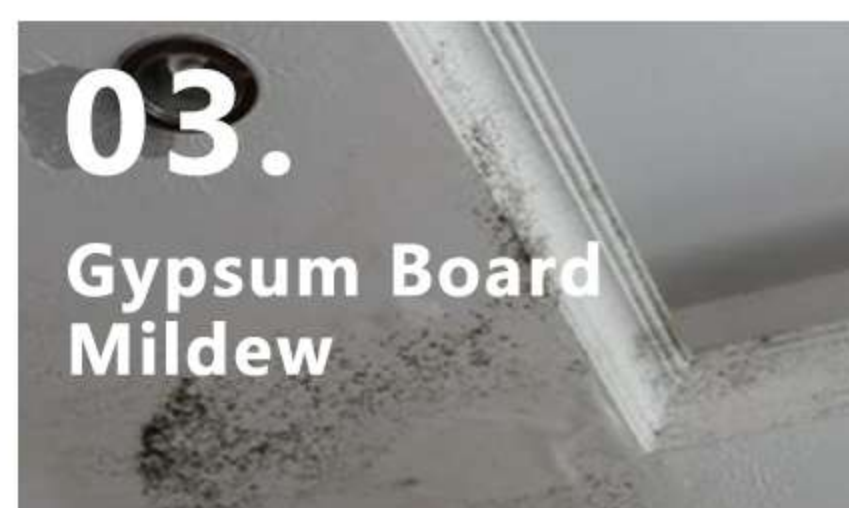
02.

Carbon Crystal
Panel Not
Impact-Resistant



03.

Gypsum Board
Mildew



04.

Fire-Retardant
Board
Flammable



■ Comparison of performance parameters

Item	ACA Decoration wall panel	Carbon crystal panel	Ceramic tile	Gypsum board
Components	Imported Virgin Pulp, Cement, Quartz Sand and Other Minerals	Carbon Powder, Calcium Powder, PVC and Additives	Plastic Clay, Quartzite, Feldspar and Other Minerals	Gypsum, Face Paper, Additives
Impact Resistance	Good	Average	Excellent	Poor
Wear Resistance	Level 4	Level 3	Level 4	Level 1
Formaldehyde Emission	Not Detected, Compliant with ENF Level	E2 Level	Not Detected, Compliant with ENF Level	E1 Level
Fire Resistance	Class A2 Non-combustible	Class B2	Class A1 Non-combustible	Class B1
Antibacterial performance	Bacteria Resistance Rate >99.9%	Bacteria Resistance Rate >90±1.5%	Bacteria Resistance Rate >99.9%	Porous Structure Prone to Bacterial Growth
Smoke Toxicity	Smokeless and Non-toxic	Toxic Gas Released When Burning	Smokeless and Non-toxic	Toxic Gas Released When Burning
Moisture Resistance	Excellent	Average	Excellent	Poor
Constructability	Dry Construction, Convenient Construction, Ready to Move in Immediately After Installation	Fast Construction, Easy Cutting, Short Construction Period	Wet Construction, Long Construction Period, Much On-site Waste	Fast Construction, Easy Installation, Short Construction Period

■ Installation Method and Process

01.

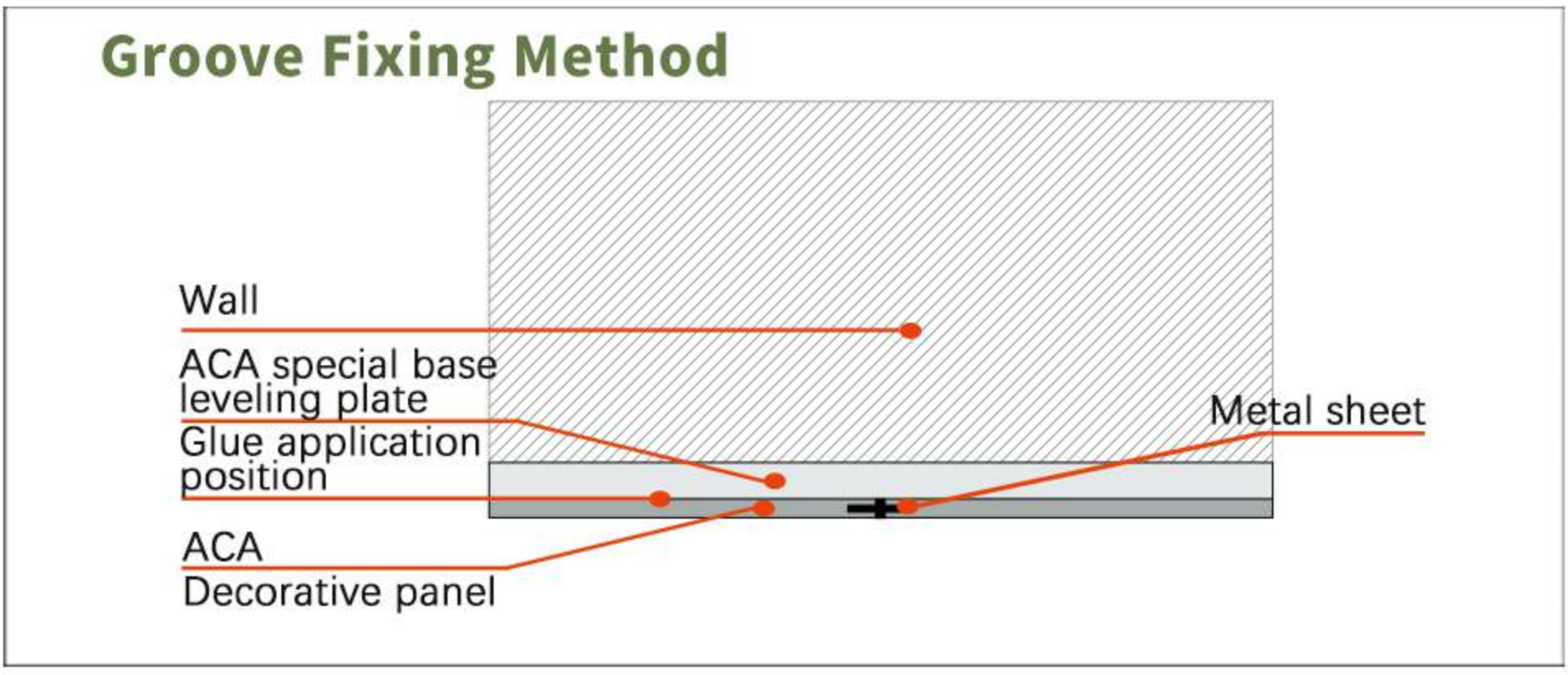
Base Leveling

Use a wall level or infrared device to level, determine the positions of the highest and lowest points, and remove cement mortar accumulation on the wall.

02.

Keel Installation

Install light steel keels according to the appropriate spacing and design requirements.



04.

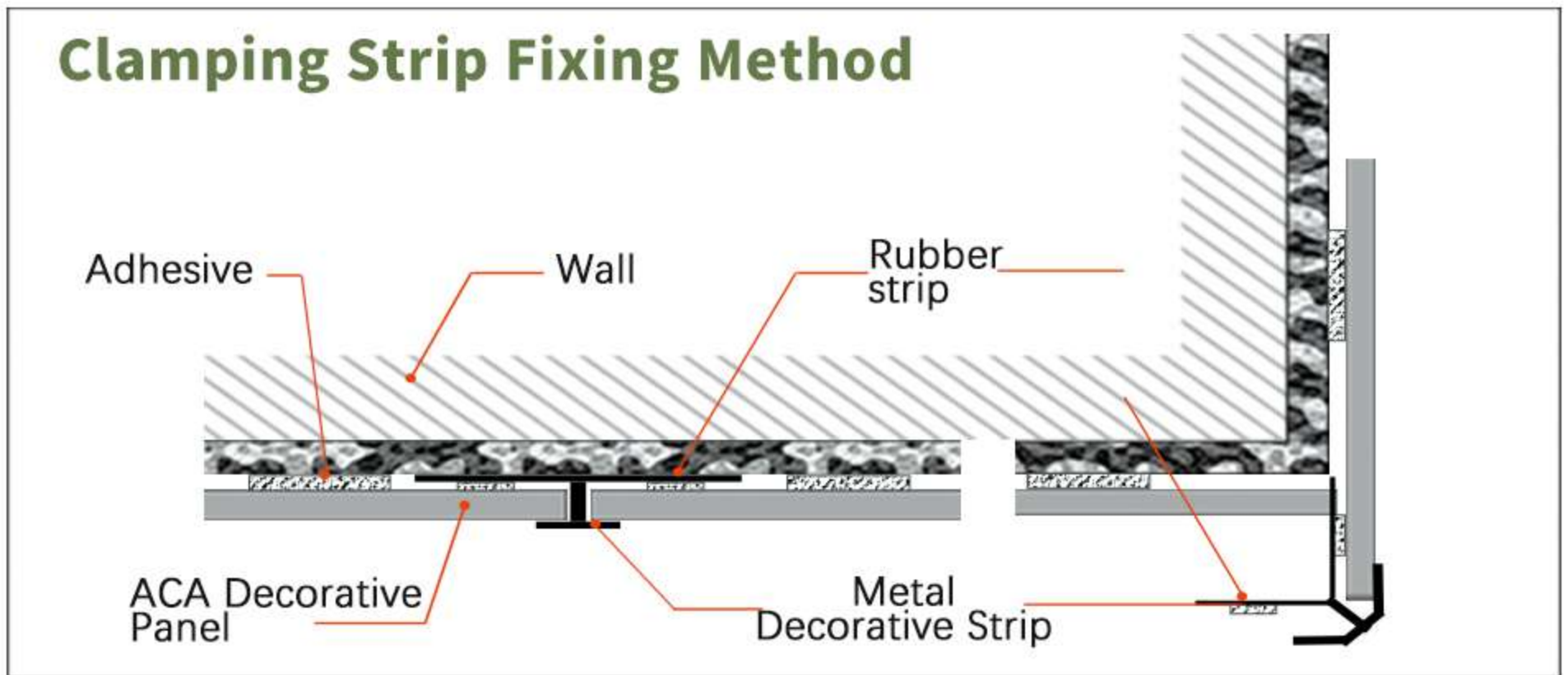
Joint Treatment

Use decorative edge trims and internal/external corner products to decoratively treat the joints of the panels via the "groove fixing method" and "clamping strip fixing method".

03.

Panel Installation

Fix the panels by means of adhesive, self-tapping screws, clamping strips, etc.



ACA Accessory system

Wall panel is a complete system. High-quality ACA wall panels necessarily require precise matching of exclusive high-quality accessories. The exclusive accessory system of ACA wall panels is a core partner tailored for its own wall panels. It not only deeply meets the dual needs of practicality and aesthetic design, but also has a rich and diverse range of categories and styles. It can easily adapt to various decoration scenarios, making the overall decoration effect more refined and unified.

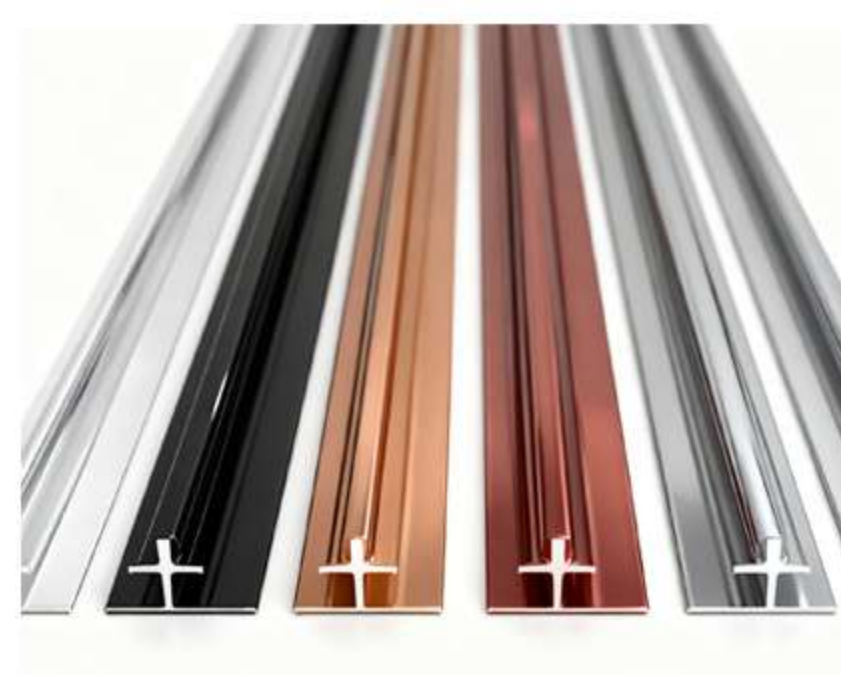
■ Flush Joint Series



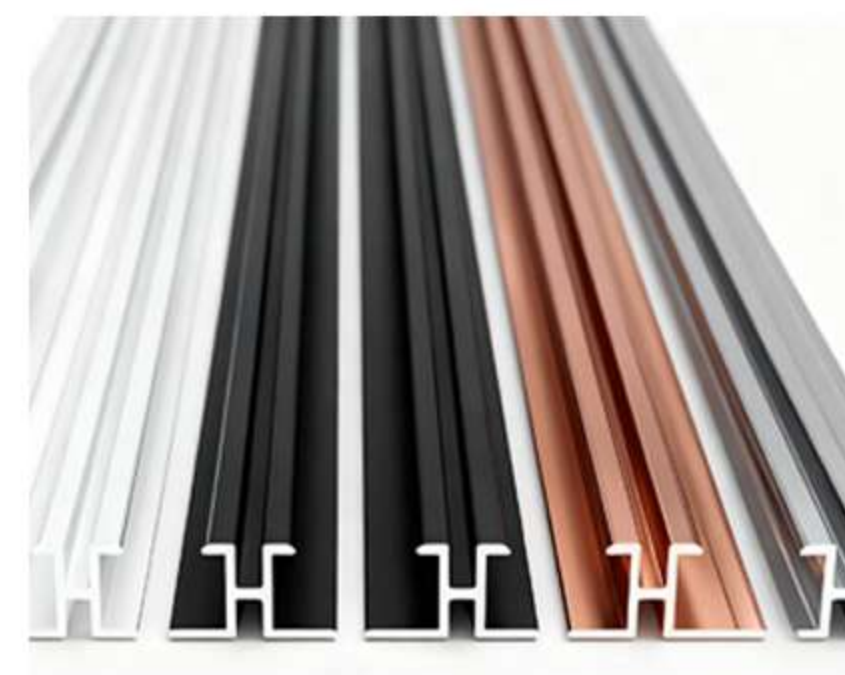
Rose Gold Narrow I-shaped



Classic Champagne
Dark I-shaped



Micro Seam Line



Geometric I-shaped

Color Customization / Customizable Spray Color / Customizable Oxidation Color / Customizable Wood Grain Laminating

■ Internal and External Corner Series



W-shaped Internal Corner



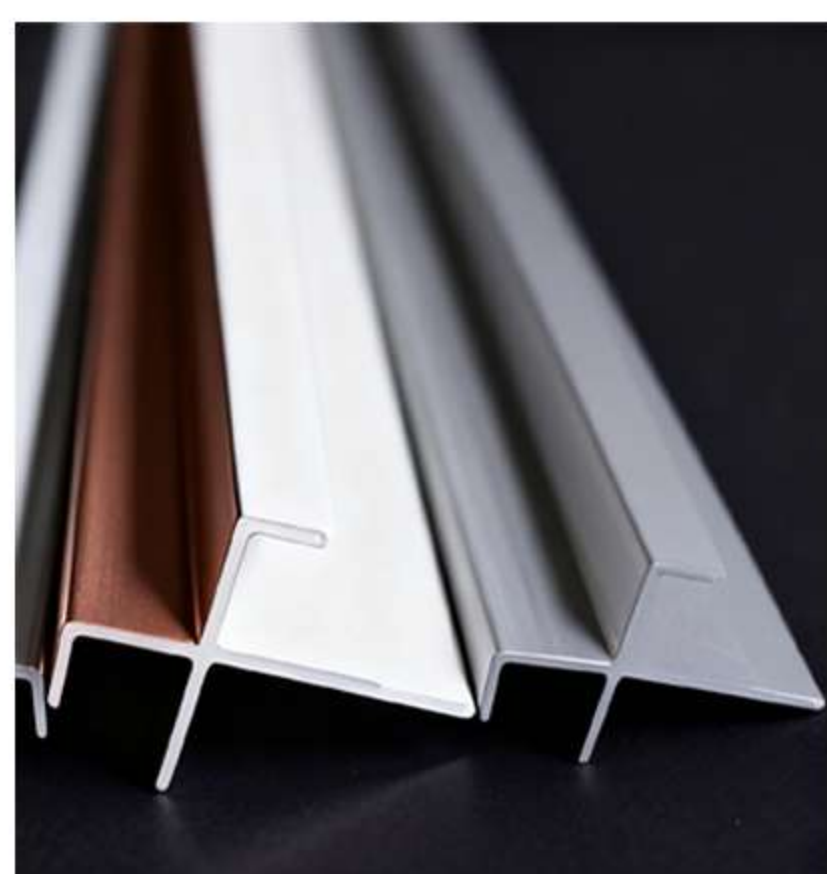
Arc External Corner



Sharp External Corner



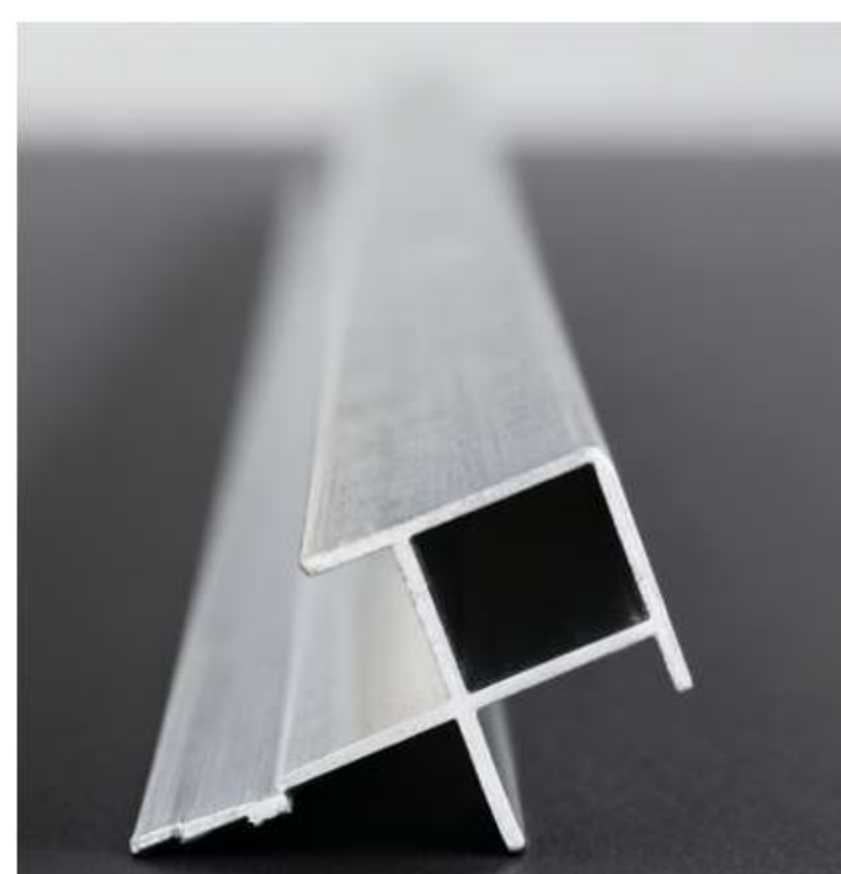
Custom 90° External Corner



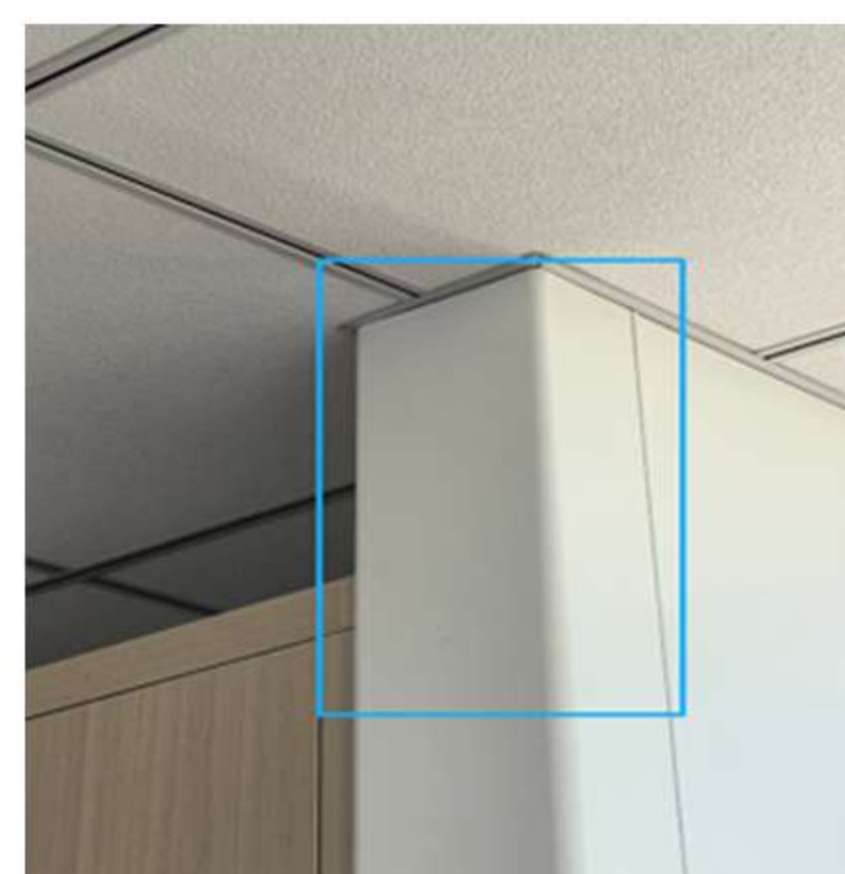
Begonia External Corner



Single-sided Internal Corner



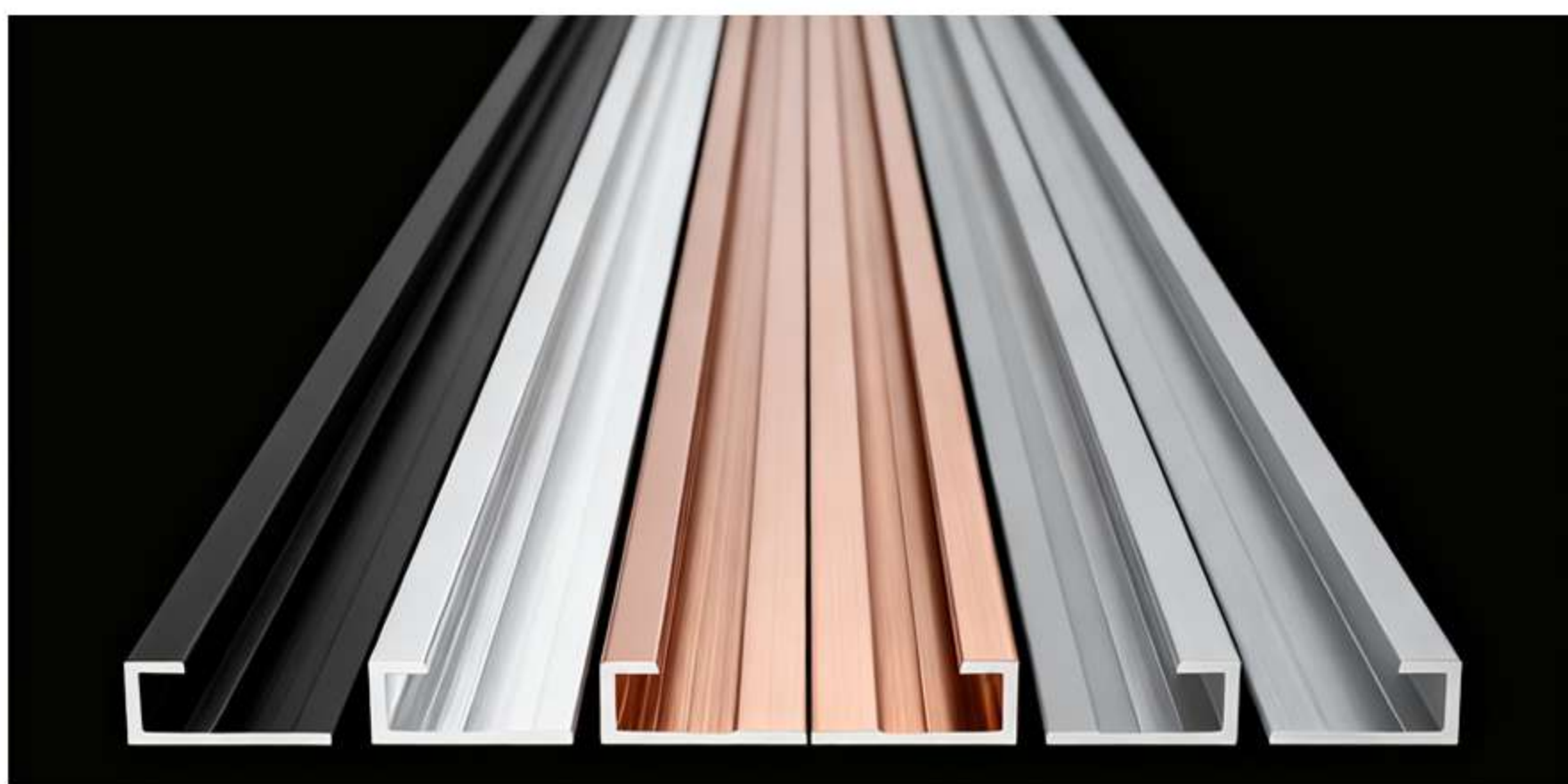
Square External Corner



Custom U-shaped External Corner

Color Customization / Customizable Spray Color / Customizable Oxidation Color / Customizable Wood Grain Laminating

■ Edge Finishing Series



Flat Bottom Edge Strip



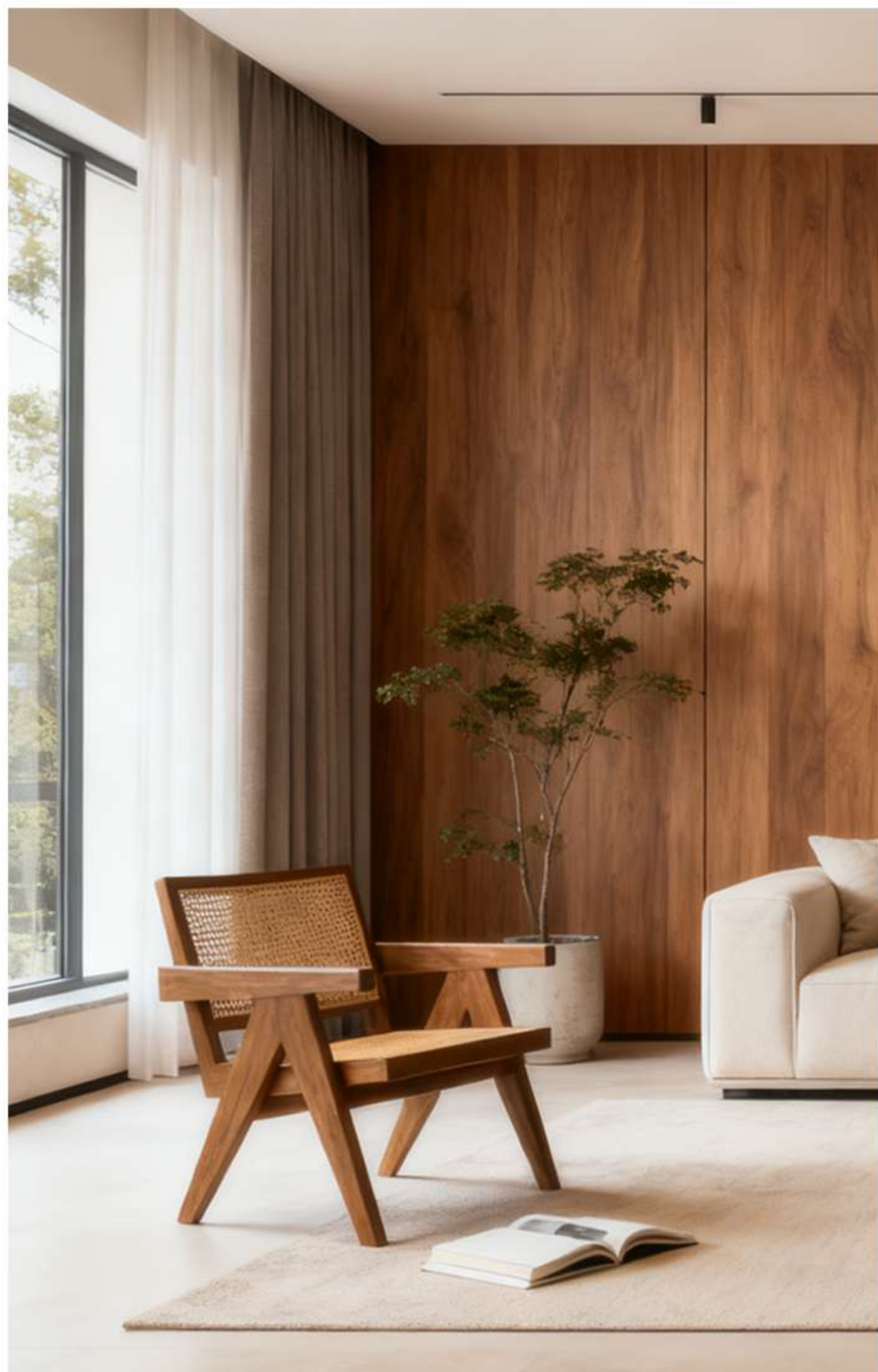
Edge Strip



L-shaped Corner Wrap

Color Customization / Customizable Spray Color / Customizable Oxidation Color / Customizable Wood Grain Laminating

■ Application field

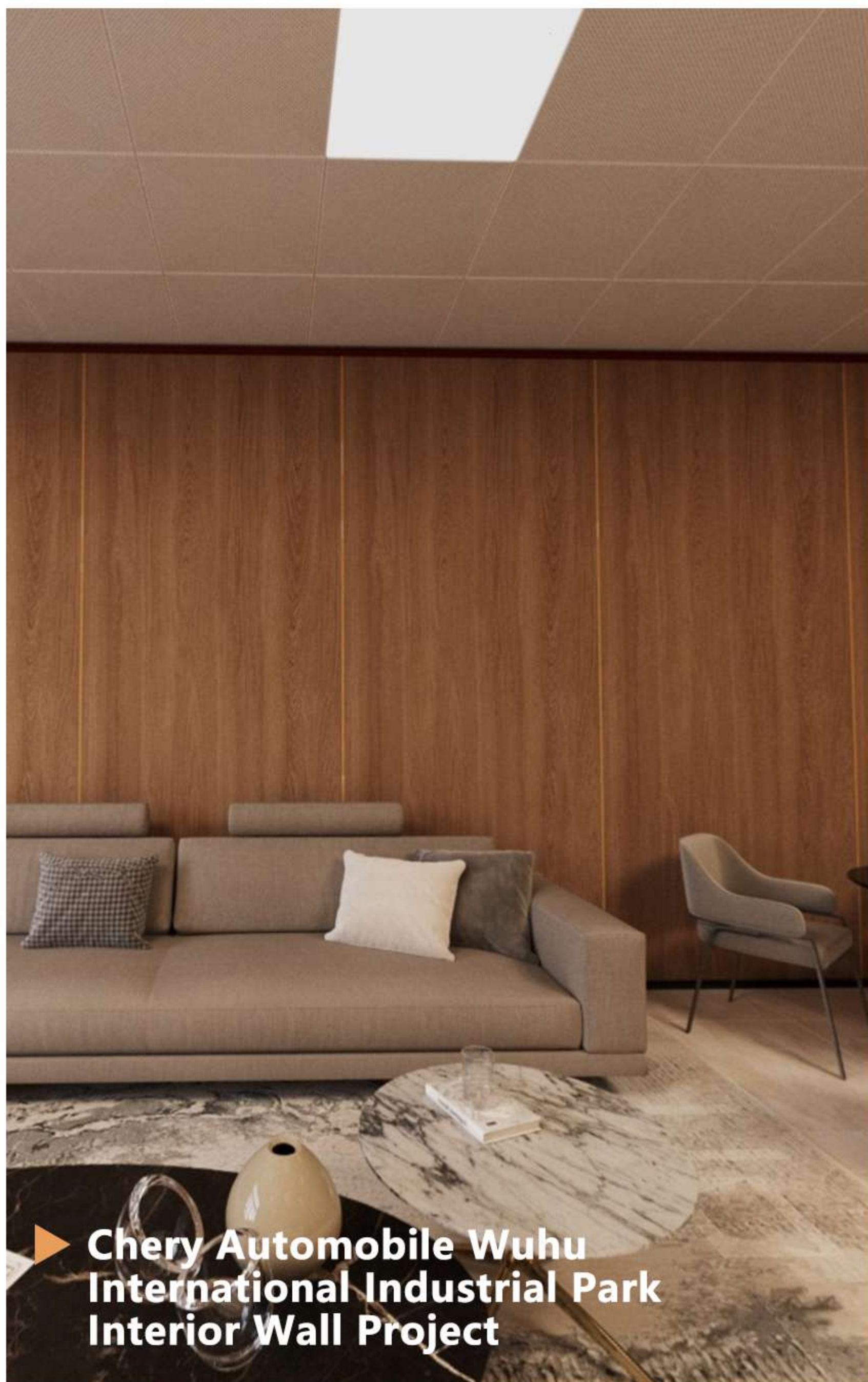


- ▶ **Industrial Field:** Factories, Laboratories
- ▶ **Residential Field:** Living Room, Bedroom, Kitchen, Bathroom, Foyer;
- ▶ **Commercial Field:** Hotel, Office Building, Shopping Mall, Restaurant, Bar, KTV;
- ▶ **Public Building Field:** Hospital, School, Library, Theater, Auditorium.





CASE APPRECIATION



▶ Chery Automobile Wuhu International Industrial Park Interior Wall Project



▶ Ophthalmic Hospital of Sun Yat-sen University, Guangzhou Project



▶ Hangzhou Art School Project



▶ Wuhu Jiangbei General Hospital Project



▶ Wuhu Fengming R&D and Innovation Center Project



▶ Sichuan Tianfu International Airport Health Service Center Project



Supreme Quality, Sincere Service



Anhui Conch Cement Co., Ltd.

Stock Code :600585/HK00914

Wuhu Conch Technology Co., Ltd.

Stock Code :02560

China Conch Venture Holdings Limited

Stock Code :00586.HK

Conch Venture Environmental Protection Technology Co., Ltd.

Stock Code : 00587.HK

Conch (Anhui) Energy-saving Environmental Protection New material Co., Ltd.

Stock Code :000619



 **0553-5630066**

Anhui Conch Venture New Energy-saving Building Materials Co., Ltd.

Address: Conch Industrial Park, Jiangbei Emerging Industrial Cluster,
Wuhu City, Anhui Province

Official Website: www.conchventure.com